

# Institutions in the UK

- A cycle of vulnerability and violence
- Is it coming to an end?

Jane Hubert and Sheila Hollins  
St George's University of London

# Long stay hospitals have almost closed in England

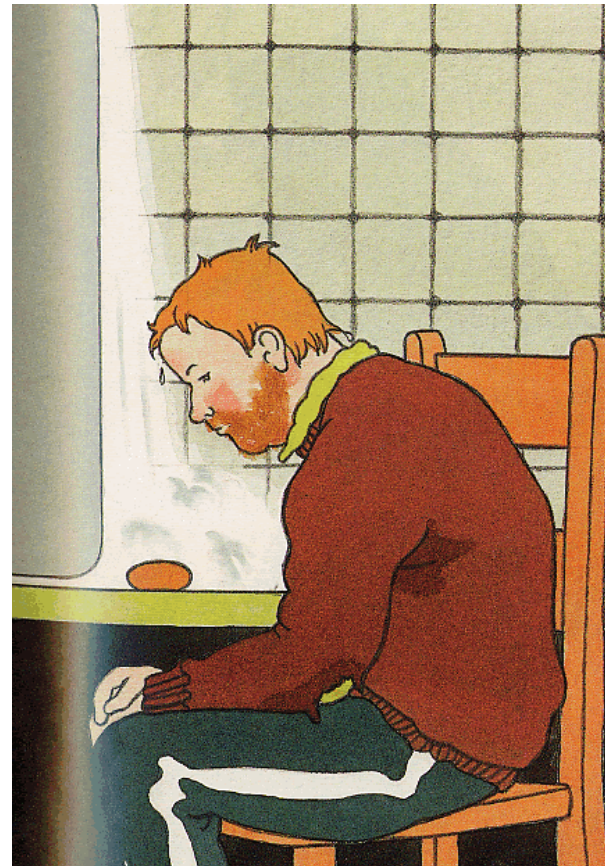
- Sexual, physical and emotional abuse was common in institutions
- But will abuse happen in new smaller homes?
- We think it will unless people are fully included in their community

# The Cornwall Inquiry - 2006

- Found abuse in residential homes
- Will now inspect all residential homes run by the NHS
- Self advocates are part of inspection teams

# Research in a locked ward of a longstay hospital

- Jane spent 250 hours living alongside and getting to know 16 men



# Kamal's Story

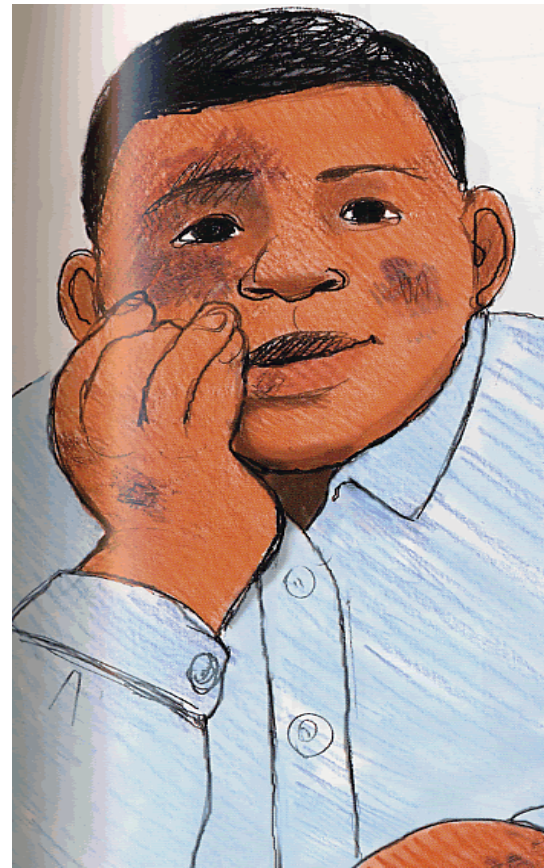
- Admitted to hospital aged 4
- Described as attractive, physically OK but his mother said:
- “..he runs and climbs everywhere -I can't look after him”
- Mum visited for 3 years then stopped because his behaviour was much worse
- Kamal was miserable, withdrawn

# 25 years later

- Kamal was unhappy, severely disturbed, taking powerful drugs to quieten him
- He would throw himself at the walls and floor, bang his head, screech and roar
- He had no words
- He had no personal history

# What did Jane find out?

- Kamal was small and frail
- Other men often hurt him
- Some staff were unkind such as taking his food away if he was too slow to eat



# Kamal

- His mum still thought about him a lot
- but she didn't visit because it was too painful to see what had happened to her son
- And she lived too far away

# What did we learn?

- People had lost their identity
- They were not seen as human beings
- Staff forgot the men had feelings
- Staff forgot they could feel pain
- Society had forgotten about them

